

2002-2003 WARRIOR WIRING DIAGRAM

Cylinder Orientation: No. 1 = Rear & No. 2 = Front

This XV1700P(C) WIRING DIAGRAM Updated by author for 2002-2009 Warrior (USA) in 5-page format

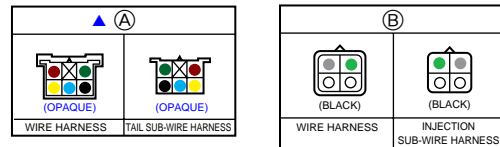
Notes & Disclaimers: A great deal of time has been spent to provide accurate information in the enclosed files. The Author takes no responsibility for the details within. Proceed at your own risk.

Couplers shown outside Sq Dotted Boundary are attached to the Main Machine Harness. Those within are part of the device. If none shown the device has terminals such as the Denso flasher (Item 45). Couplers shown from the front connection end, viewed looking into the plug with the Polarizing Nib UP.

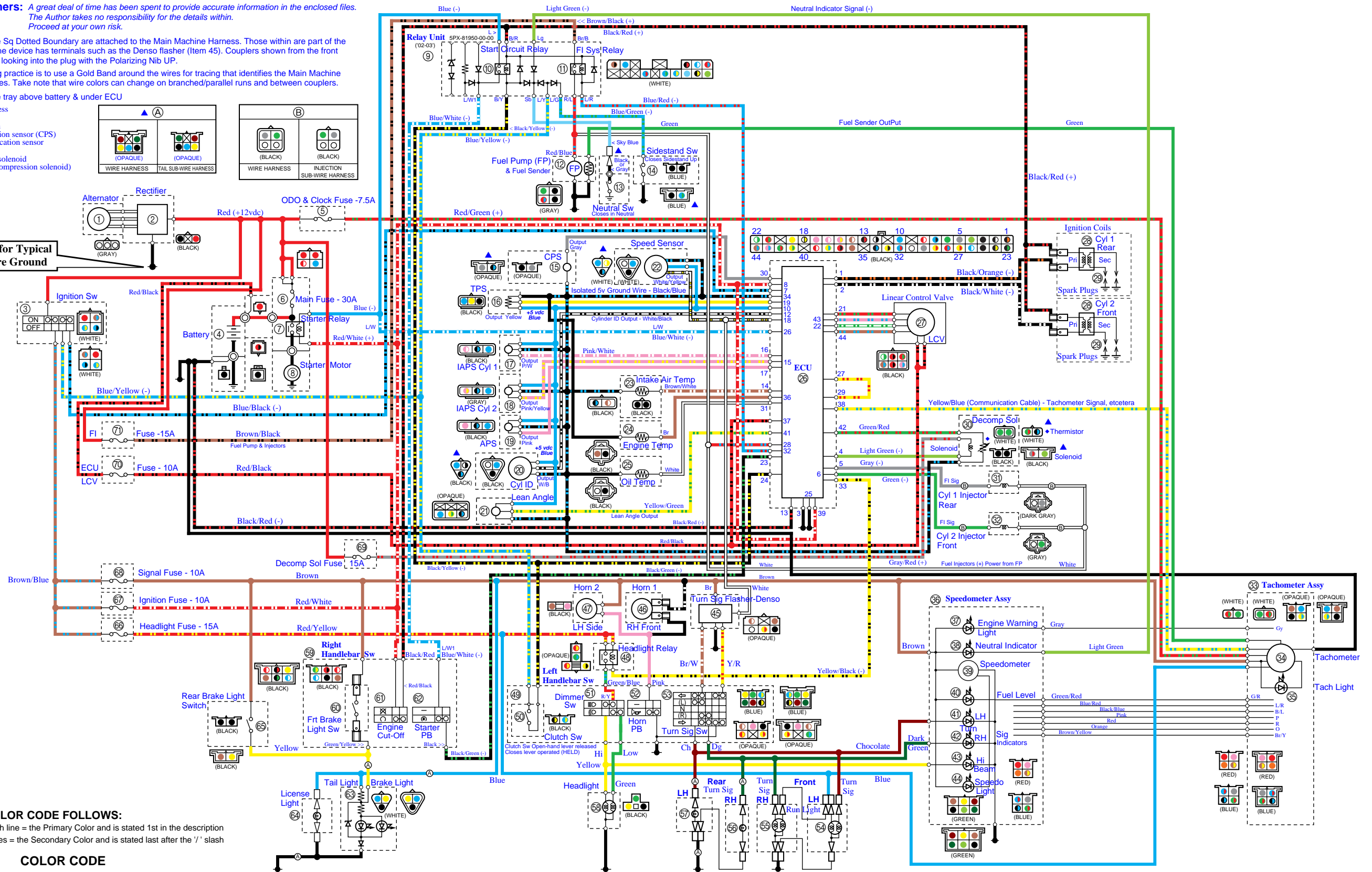
Yamaha standard wiring practice is to use a Gold Band around the wires for tracing that identifies the Main Machine Harness from the Devices. Take note that wire colors can change on branched/parallel runs and between couplers.

▲ Couplers located in wire tray above battery & under ECU

- Item A - Rear fender harness
- Item 13 - Neutral switch
- Item 14 - Sidestand switch
- Item 15 - Crankshaft position sensor (CPS)
- Item 20 - Cylinder identification sensor
- Item 22 - Speed sensor
- Item 30 - Decompression solenoid
- Thermistor (Decompression solenoid)



Symbol for Typical Hardwire Ground



KEY to WIRE COLOR CODE FOLLOWS:

The solid longer dash line = the Primary Color and is stated 1st in the description
The 2-short dash lines = the Secondary Color and is stated last after the '/' slash

COLOR CODE

Black (B) (B3)=ECU Pins 3 & 25	Dark green (Dg)	Orange (O)	White (W)	Black/Orange (B/O)	Blue/Black (L/B)	Blue/Yellow (L/Y)	Brown/Yellow (Br/Y)	Gray/Red (Gy/R)	Red/Black (R/B)	Red/Yellow (R/Y)	Yellow/Black (Y/B)
Blue (L)	Green (G)	Pink (P)	Yellow (Y)	Black/Red (B/R)	Blue/Green (L/G)	Brown/Black (Br/B)	Green/Blue (G/L)	Pink/Blue (P/L)	Red/Green (R/G)	White/Black (W/B)	Yellow/Green (Y/G)
Brown (Br)	Gray (Gy)	Red (R)	Black/Green (B/G)	Black/White (B/W)	Blue/Red (L/R)	Brown/Blue (Br/L)	Green/Red (G/R)	Pink/White (P/W)	Red/Blue (R/L)	White/Green (W/G)	Yellow/Blue (Y/L)
Chocolate (Ch)	Light green (Lg)	Sky blue (Sb)	Black/Blue (B/L)	Black/Yellow (B/Y)	Blue/White (L/W) & (L/W1)	Brown/White (Br/W)	Green/Yellow (G/Y)	Pink/Yellow (P/Y)	Red/White (R/W)	White/Yellow (W/Y)	Yellow/Red (Y/R)

2004-2009 WARRIOR WIRING DIAGRAM (USA)

Cylinder Orientation: No. 1 = Rear & No. 2 = Front

This XV1700P(C) WIRING DIAGRAM Updated by author for 2002-2009 Warrior (USA) in 5-page format

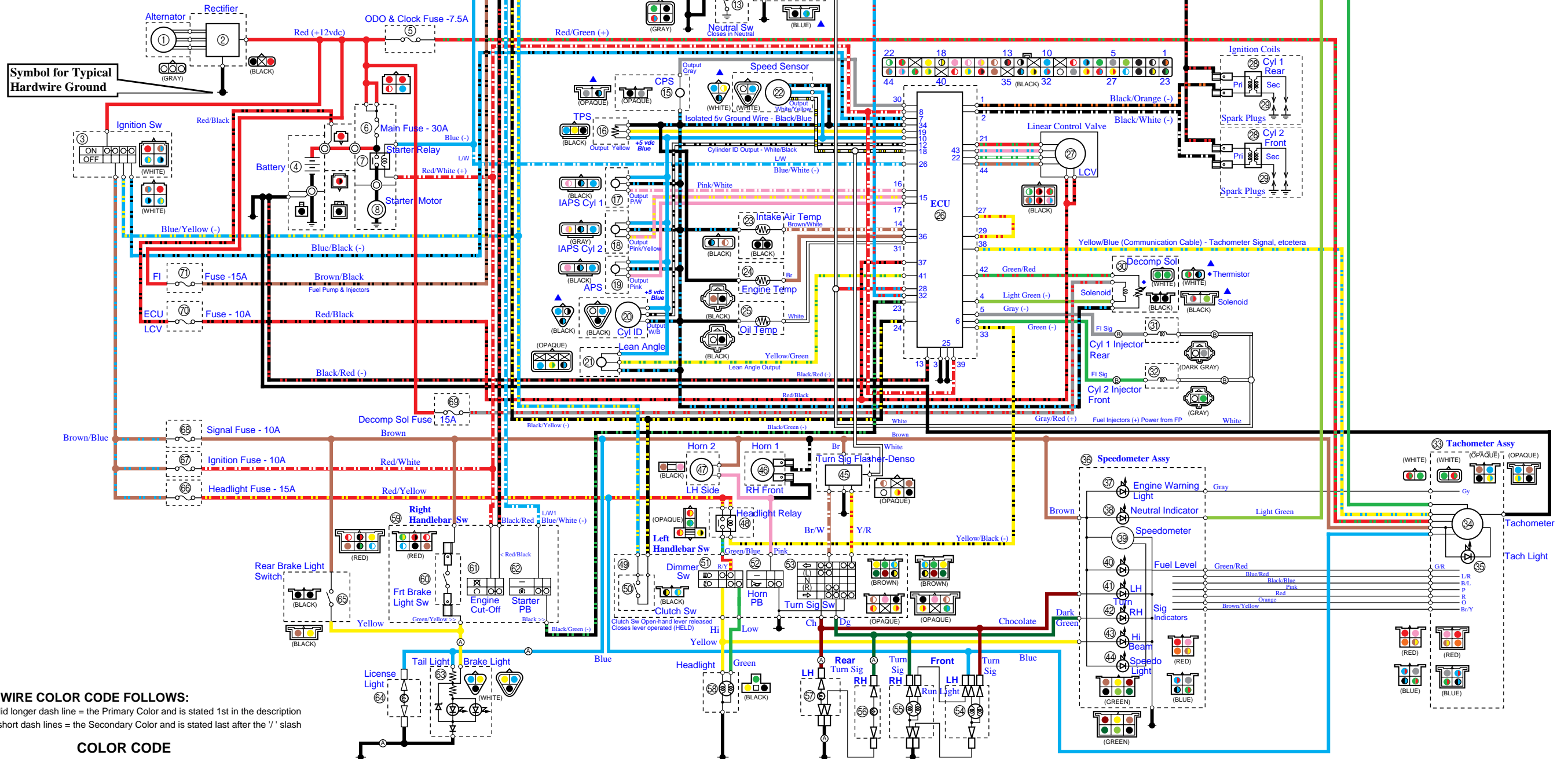
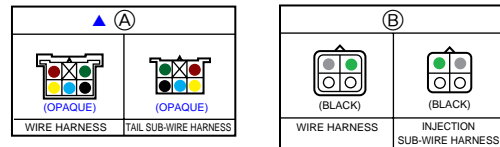
Notes & Disclaimers: A great deal of time has been spent to provide accurate information in the enclosed files. The Author takes no responsibility for the details herein. Proceed at your own risk.

Couplers shown outside Sq Dotted Boundary are attached to the Main Machine Harness. Those within are part of the device. If none shown the device has terminals such as the Denso flasher (Item 45). Couplers shown from the front connection end, viewed looking into the plug with the Polarizing Nib UP.

Yamaha standard wiring practice is to use a Gold Band around the wires for tracing that identifies the Main Machine Harness from the Devices. Take note that wire colors can change on branched/parallel runs and between couplers.

▲ Couplers located in wire tray above battery & under ECU

- Item A - Rear fender harness
- Item 13 - Neutral switch
- Item 14 - Sidestand switch
- Item 15 - Crankshaft position sensor (CPS)
- Item 20 - Cylinder identification sensor
- Item 22 - Speed sensor
- Item 30 - Decompression solenoid
- Thermistor (Decompression solenoid)



KEY to WIRE COLOR CODE FOLLOWS:

The solid longer dash line = the Primary Color and is stated 1st in the description
The 2-short dash lines = the Secondary Color and is stated last after the '/' slash

COLOR CODE

Black (B) (B3)=ECU Pins 3 & 25	Dark green (Dg)	Orange (O)	White (W)	Black/Orange (B/O)	Blue/Black (L/B)	Blue/Yellow (L/Y)	Brown/Yellow (Br/Y)	Gray/Red (Gy/R)	Red/Black (R/B)	Red/Yellow (R/Y)	Yellow/Black (Y/B)
Blue (L)	Green (G)	Pink (P)	Yellow (Y)	Black/Red (B/R)	Blue/Green (L/G)	Brown/Black (Br/B)	Green/Blue (G/L)	Pink/Blue (P/L)	Red/Green (R/G)	White/Black (W/B)	Yellow/Green (Y/G)
Brown (Br)	Gray (Gy)	Red (R)	Black/Green (B/G)	Black/White (B/W)	Blue/Red (L/R)	Brown/Blue (Br/L)	Green/Red (G/R)	Pink/White (P/W)	Red/Blue (R/L)	White/Green (W/G)	Yellow/Blue (Y/L)
Chocolate (Ch)	Light green (Lg)	Sky blue (Sb)	Black/Blue (B/L)	Black/Yellow (B/Y)	Blue/White (L/W) & (L/W1)	Brown/White (Br/W)	Green/Yellow (G/Y)	Pink/Yellow (P/Y)	Red/White (R/W)	White/Yellow (W/Y)	Yellow/Red (Y/R)

XV1700P/XV1700PC 2002 WIRING DIAGRAM

- | | |
|--|--------------------------------|
| ① Generator | ⑥⑧ Signaling system fuse |
| ② Rectifier/regulator | ⑥⑨ Decompression solenoid fuse |
| ③ Main switch | ⑦⑩ ECU fuse |
| ④ Battery | ⑦⑪ Fuel injection system fuse |
| ⑤ Backup fuse (odometer and clock) | |
| ⑥ Main fuse | |
| ⑦ Starter relay | |
| ⑧ Starter motor | |
| ⑨ Relay unit | |
| ⑩ Starting circuit cut-off relay | |
| ⑪ Fuel injection system relay | |
| ⑫ Fuel pump | |
| ⑬ Neutral switch | |
| ⑭ Sidestand switch | |
| ⑮ Crankshaft position sensor | |
| ⑯ Throttle position sensor | |
| ⑰ Intake air pressure sensor 1 | |
| ⑱ Intake air pressure sensor 2 | |
| ⑲ Atmospheric pressure sensor | |
| ⑳ Cylinder identification sensor | |
| ㉑ Lean angle cut-off switch | |
| ㉒ Speed sensor | |
| ㉓ Intake air temperature sensor | |
| ㉔ Engine temperature sensor | |
| ㉕ Oil temperature sensor | |
| ㉖ ECU | |
| ㉗ Linear control valve | |
| ㉘ Ignition coil | |
| ㉙ Spark plug | |
| ㉚ Decompression solenoid | |
| ㉛ Cylinder #1 - injector | |
| ㉜ Cylinder #2 - injector | |
| ㉝ Tachometer assembly | |
| ㉞ Tachometer | |
| ㉟ Tachometer light | |
| ㊱ Speedometer assembly | |
| ㊲ Engine trouble warning light | |
| ㊳ Neutral indicator light | |
| ㊴ Speedometer | |
| ㊵ Fuel level warning light | |
| ㊶ Left turn signal indicator light | |
| ㊷ Right turn signal indicator light | |
| ㊸ High beam indicator light | |
| ㊹ Speedometer light | |
| ㊺ Turn signal relay | |
| ㊻ Horn 1 | |
| ㊼ Horn 2 | |
| ㊽ Headlight relay | |
| ㊾ Left handlebar switch | |
| ㊿ Clutch switch | |
| ① Dimmer switch | |
| ② Horn switch | |
| ③ Turn signal switch | |
| ④ Front turn signal/position light (left) | |
| ⑤ Front turn signal/position light (right) | |
| ⑥ Rear turn signal light (right) | |
| ⑦ Rear turn signal light (left) | |
| ⑧ Headlight | |
| ⑨ Right handlebar switch | |
| ⑩ Front brake light switch | |
| ⑪ Engine stop switch | |
| ⑫ Start switch | |
| ⑬ Tail/brake light | |
| ⑭ License plate light | |
| ⑮ Rear brake light switch | |
| ⑯ Headlight fuse | |
| ⑰ Ignition fuse | |

XV17PCV(C)/XV17PCMV(C) 2006 WIRING DIAGRAM

- ① Generator
- ② Rectifier/regulator
- ③ Main switch
- ④ Battery
- ⑤ Backup fuse (odometer and clock)
- ⑥ Main fuse
- ⑦ Starter relay
- ⑧ Starter motor
- ⑨ Relay unit
- ⑩ Starting circuit cut-off relay
- ⑪ Fuel injection system relay
- ⑫ Fuel pump
- ⑬ Neutral switch
- ⑭ Sidestand switch
- ⑮ Crankshaft position sensor
- ⑯ Throttle position sensor
- ⑰ Intake air pressure sensor 1
- ⑱ Intake air pressure sensor 2
- ⑲ Atmospheric pressure sensor
- ⑳ Cylinder identification sensor
- ㉑ Lean angle cut-off switch
- ㉒ Speed sensor
- ㉓ Intake air temperature sensor
- ㉔ Engine temperature sensor
- ㉕ Oil temperature sensor
- ㉖ ECU
- ㉗ Linear control valve
- ㉘ Ignition coil
- ㉙ Spark plug
- ㊱ Decompression solenoid
- ㊲ Cylinder #1 - injector
- ㊳ Cylinder #2 - injector
- ㊴ Tachometer assembly
- ㊵ Tachometer
- ㊶ Tachometer light
- ㊷ Speedometer assembly
- ㊸ Engine trouble warning light
- ㊹ Neutral indicator light
- ㊺ Speedometer
- ㊻ Fuel level warning light
- ㊼ Left turn signal indicator light
- ㊽ Right turn signal indicator light
- ㊾ High beam indicator light
- ㊿ Speedometer light
- 1 Turn signal relay
- 2 Horn 1
- 3 Horn 2
- 4 Headlight relay
- 5 Left handlebar switch
- 6 Clutch switch
- 7 Dimmer switch
- 8 Horn switch
- 9 Turn signal switch
- 10 Front turn signal/position light (left)

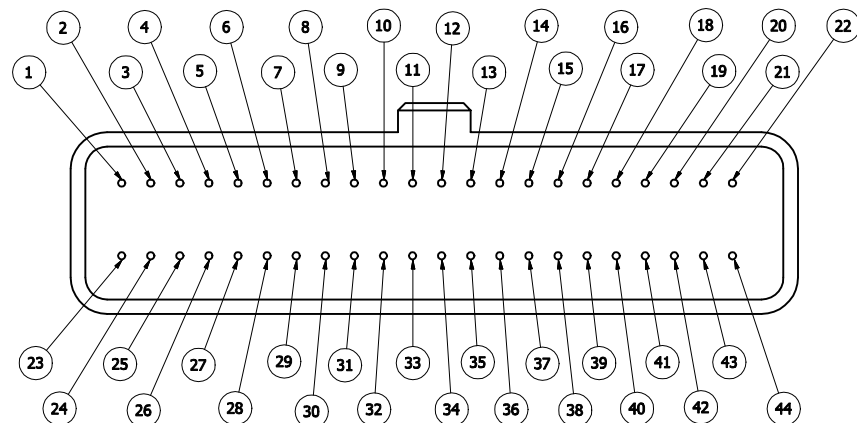
- 11 Front turn signal/position light (right)
- 12 Rear turn signal light (right)
- 13 Rear turn signal light (left)
- 14 Headlight
- 15 Right handlebar switch
- 16 Front brake light switch
- 17 Engine stop switch
- 18 Start switch
- 19 Tail/brake light
- 20 License plate light
- 21 Rear brake light switch
- 22 Headlight fuse
- 23 Ignition fuse
- 24 Signaling system fuse
- 25 Decompression solenoid fuse
- 26 ECU fuse
- 27 Fuel injection system fuse

COLOR CODE

- B..... Black
- B3..... Black 3
- Br Brown
- Ch Chocolate
- Dg Dark green
- G Green
- Gy Gray
- L Blue
- Lg Light green
- O Orange
- P..... Pink
- R Red
- Sb..... Sky blue
- W..... White
- Y..... Yellow
- B/G Black/Green
- B/L..... Black/Blue
- B/O Black/Orange
- B/R Black/Red
- B/W Black/White
- B/Y Black/Yellow
- Br/B Brown/Black
- Br/L Brown/Blue
- Br/W Brown/White
- Br/Y Brown/Yellow
- G/L Green/Blue
- G/R..... Green/Red
- G/W Green/White
- G/Y Green/Yellow
- Gy/R..... Gray/Red
- L/B..... Blue/Black
- L/G Blue/Green
- L/R Blue/Red
- L/W..... Blue/White
- L/W1 Blue/White 1
- L/Y..... Blue/Yellow
- P/L..... Pink/Blue
- P/Y Pink/Yellow
- P/W Pink/White
- R/B Red/Black
- R/G..... Red/Green
- R/L Red/Blue
- R/W Red/White
- R/Y Red/Yellow
- W/B White/Black
- W/G..... White/Green
- W/Y White/Yellow
- Y/B Yellow/Black
- Y/G Yellow/Green
- Y/L..... Yellow/Blue
- Y/R Yellow/Red

Pin No.	Wire Color	Polarity	Connected Components
1	Black/Orange	-	Rear Cylinder (Cyl. #1) Coil Primary Signal
2	Black/White	-	Front Cylinder (Cyl. #2) Coil Primary Signal
3	Black	-	B3 - Ground
4	Light Green	-	Decompression Solenoid Signal
5	Gray	-	Rear Cylinder (Cyl #1) Injector Signal
6	Green	-	Front Cylinder (Cyl #2) Injector Signal
7	Blue/Black	-	Ignition Switch - 12v Ground Loop for Start Circuit Interlocks (Blue/Yellow)
8	Red/White	+	Ignition Fuse (+12v Power), PIN 39, Starter Relay Coil, Engine Stop Switch
9	-		
10	Blue	+	5 VDC Power - Speed Sensor, Throttle Position Sensor, Intake Air Pressure Sensors (Cyl's #1 & #2) and Atmospheric Pressure, Cylinder ID & Lean Angle Sensors
11	-		
12	White/Black	+	Cylinder ID Sensor Signal
13	Black/Red	-	12v Ground Source ECU / Battery Ground
14	Brown/White	~	Intake Air Temperature Sensor Signal
15	Pink Yellow	+	Intake Air Pressure Sensor (Cyl #2) Signal
16	Pink/White	+	Intake Air Pressure Sensor (Cyl.#1) Signal
17	Pink	+	Atmospheric Pressure Sensor Signal
18	White/Yellow	+	Speed Sensor Signal - Branches to White for Turn Signal Cancel (DENSO Flasher Unit)
19	Yellow	+	Throttle Position Sensor Signal
20	-		
21	Red/Green	-	Linear Control Valve Signal
22	White/Green	-	Linear Control Valve Signal
23	Black/Green	-	Starter Push Button Switch
24	Black/Yellow	-	Clutch Switch, Start Circuit Relay Coil
25	Black	-	B25 (B3) - Ground
26	Blue/White	-	Branches to Blue for Starter Solenoid Coil, Start Circuit Relay Contact
27	Yellow/Red	-	ECU Adjust/Diagnostic Mode - PIN 29
28	Red/Blue	+	Branches to White - Fuel Pump, Fuel Injection System Relay Contact, Injectors 1 & 2
29	Yellow/Red	-	ECU Adjust/Diagnostic Mode - PIN 27
30	Gray	+	Crank Position Sensor Signal
31	White	~	Oil Temperature Sensor Signal
32	Blue/Red	-	Fuel Injection System Relay Coil
33	Yellow/Black	-	Headlight Relay Coil
34	Black/Blue	-	Isolated 5v Ground - Crank Position & Throttle Position Sensors, Intake Air Pressure Sensors (Cyl's #1 & #2), Atmospheric Pressure, Cylinder ID & Lean Angle Sensors, Speed Sensor, Decomp Solenoid Thermistor, Intake Air, Engine & Oil Temp Sensors
35	-		
36	Brown	~	Engine Temperature Sensor Signal
37	Red/Black	+	ECU Fuse (+12v Power), Linear Control Valve Power
38	Yellow/Blue		Communication Cable to Meter - Tachometer Signal, etcetera
39	Red/White	+	PIN 8 - Branches to Red/White Wire
40	-		
41	Yellow/Green	+	Lean Angle Cutoff Switch Signal
42	Green/Red	~	Decompression Solenoid Thermistor
43	Pink/Blue	-	Linear Control Valve Signal
44	Brown/Blue	-	Linear Control Valve Signal

**** COMPONENT DOCUMENTATION by AlanH ****



DRAWN BY: SDOWAWARRIOR		DATE: 6/26/2009		TITLE ELECTRICAL CONTROL UNIT PINOUT		
MAKE: YAMAHA						
MODEL: ROADSTAR WARRIOR		SIZE C		PART NO: 5PX-8591A-01-00		REV 0
ENGINE: 1670cc V2 EFI		SCALE: N.T.S.		SHEET 1 OF 1		

0	07/20/14	Remove Keying Error Pin 7 & start @ rev 0	ARH
NO.	DATE	REVISIONS	BY

YAMAHA MOTORS

FACTORY MANUAL

OEM WIRING

DIAGRAMS

WITH

CORRECTIONS

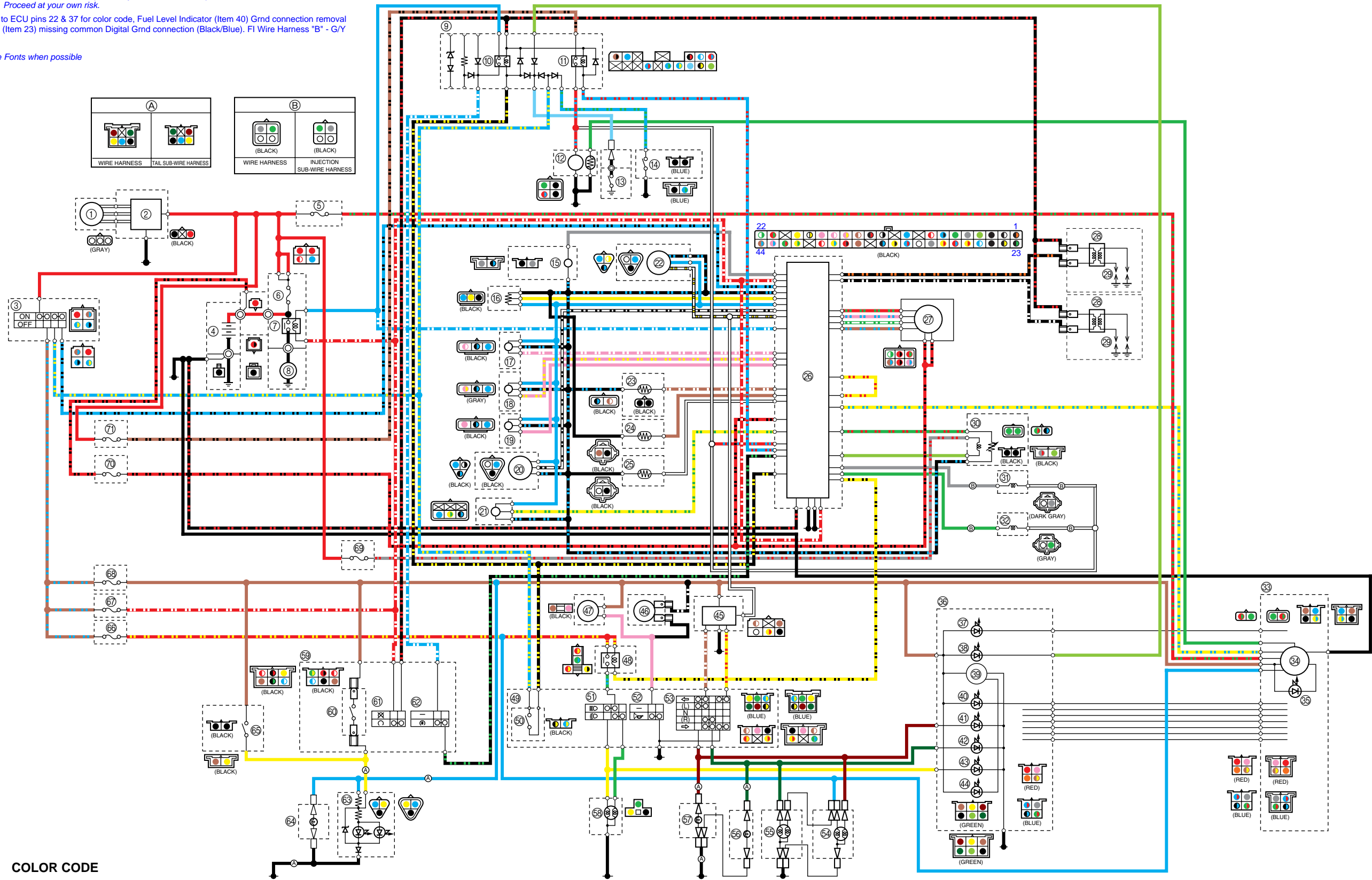
by AlanH

2002-2003 ROAD STAR WARRIOR - XV17PCP(C)/XV17PCR(C) - WIRING DIAGRAM (For USA)

Notes & Disclaimers: The Author takes no responsibility for the information provided.
Proceed at your own risk.

Changes made are corrections to ECU pins 22 & 37 for color code, Fuel Level Indicator (Item 40) Grnd connection removal and IAPS Cyl 2 (Item 18) & IAT (Item 23) missing common Digital Grnd connection (Black/Blue). FI Wire Harness "B" - G/Y (Green/Yellow = Gy (Gray)

All Changes recorded with Blue Fonts when possible



COLOR CODE

Black	Dark green	Orange	White	Black/Orange	Blue/Black	Blue/Yellow	Brown/Yellow	Gray/Red	Red/Black	Red/Yellow	Yellow/Black
Blue	Green	Pink	Yellow	Black/Red	Blue/Green	Brown/Black	Green/Blue	Pink/Blue	Red/Green	White/Black	Yellow/Green
Brown	Gray	Red	Black/Green	Black/White	Blue/Red	Brown/Blue	Green/Red	Pink/White	Red/Blue	White/Green	Yellow/Blue
Chocolate	Light green	Sky blue	Black/Blue	Black/Yellow	Blue/White	Brown/White	Green/Yellow	Pink/Yellow	Red/White	White/Yellow	Yellow/Red

XV1700P/XV1700PC WIRING DIAGRAM

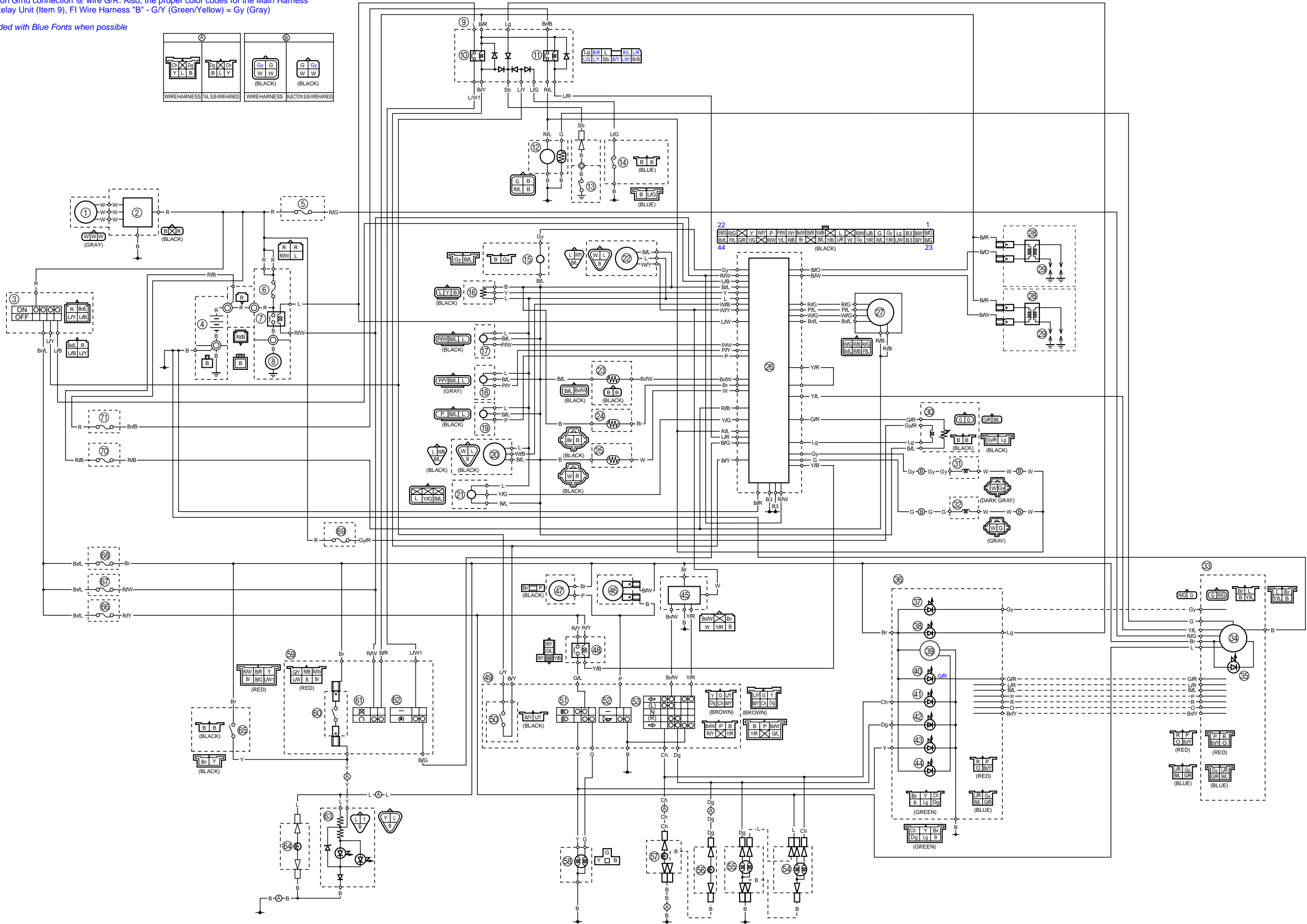
- | | |
|--|--------------------------------|
| ① Generator | ⑥⑧ Signaling system fuse |
| ② Rectifier/regulator | ⑥⑨ Decompression solenoid fuse |
| ③ Main switch | ⑦⑩ ECU fuse |
| ④ Battery | ⑦⑪ Fuel injection system fuse |
| ⑤ Backup fuse (odometer and clock) | |
| ⑥ Main fuse | |
| ⑦ Starter relay | |
| ⑧ Starter motor | |
| ⑨ Relay unit | |
| ⑩ Starting circuit cut-off relay | |
| ⑪ Fuel injection system relay | |
| ⑫ Fuel pump | |
| ⑬ Neutral switch | |
| ⑭ Sidestand switch | |
| ⑮ Crankshaft position sensor | |
| ⑯ Throttle position sensor | |
| ⑰ Intake air pressure sensor 1 | |
| ⑱ Intake air pressure sensor 2 | |
| ⑲ Atmospheric pressure sensor | |
| ⑳ Cylinder identification sensor | |
| ㉑ Lean angle cut-off switch | |
| ㉒ Speed sensor | |
| ㉓ Intake air temperature sensor | |
| ㉔ Engine temperature sensor | |
| ㉕ Oil temperature sensor | |
| ㉖ ECU | |
| ㉗ Linear control valve | |
| ㉘ Ignition coil | |
| ㉙ Spark plug | |
| ㉚ Decompression solenoid | |
| ㉛ Cylinder #1 - injector | |
| ㉜ Cylinder #2 - injector | |
| ㉝ Tachometer assembly | |
| ㉞ Tachometer | |
| ㉟ Tachometer light | |
| ㊱ Speedometer assembly | |
| ㊲ Engine trouble warning light | |
| ㊳ Neutral indicator light | |
| ㊴ Speedometer | |
| ㊵ Fuel level warning light | |
| ㊶ Left turn signal indicator light | |
| ㊷ Right turn signal indicator light | |
| ㊸ High beam indicator light | |
| ㊹ Speedometer light | |
| ㊺ Turn signal relay | |
| ㊻ Horn 1 | |
| ㊼ Horn 2 | |
| ㊽ Headlight relay | |
| ㊾ Left handlebar switch | |
| ㊿ Clutch switch | |
| ① Dimmer switch | |
| ② Horn switch | |
| ③ Turn signal switch | |
| ④ Front turn signal/position light (left) | |
| ⑤ Front turn signal/position light (right) | |
| ⑥ Rear turn signal light (right) | |
| ⑦ Rear turn signal light (left) | |
| ⑧ Headlight | |
| ⑨ Right handlebar switch | |
| ⑩ Front brake light switch | |
| ⑪ Engine stop switch | |
| ⑫ Start switch | |
| ⑬ Tail/brake light | |
| ⑭ License plate light | |
| ⑮ Rear brake light switch | |
| ⑯ Headlight fuse | |
| ⑰ Ignition fuse | |

Notes & Disclaimers: The Author takes no responsibility for the information provided.
Proceed at your own risk.

Changes made by author are corrections to ECU pins 2 & 8 for color code and Fuel Level Indicator (Item 40)
Removal of Common Grnd connection @ wire G/R. Also, the proper color codes for the Main Harness
Connector of the Relay Unit (Item 9), FI Wire Harness "B" - G/Y (Green/Yellow) = Gy (Gray)

All Changes recorded with Blue Fonts when possible

2004-2009 ROAD STAR WARRIOR WIRING DIAGRAM (USA)



XV17PCV(C)/XV17PCMV(C) 2006 WIRING DIAGRAM

- ① Generator
- ② Rectifier/regulator
- ③ Main switch
- ④ Battery
- ⑤ Backup fuse (odometer and clock)
- ⑥ Main fuse
- ⑦ Starter relay
- ⑧ Starter motor
- ⑨ Relay unit
- ⑩ Starting circuit cut-off relay
- ⑪ Fuel injection system relay
- ⑫ Fuel pump
- ⑬ Neutral switch
- ⑭ Sidestand switch
- ⑮ Crankshaft position sensor
- ⑯ Throttle position sensor
- ⑰ Intake air pressure sensor 1
- ⑱ Intake air pressure sensor 2
- ⑲ Atmospheric pressure sensor
- ⑳ Cylinder identification sensor
- ㉑ Lean angle cut-off switch
- ㉒ Speed sensor
- ㉓ Intake air temperature sensor
- ㉔ Engine temperature sensor
- ㉕ Oil temperature sensor
- ㉖ ECU
- ㉗ Linear control valve
- ㉘ Ignition coil
- ㉙ Spark plug
- ㉚ Decompression solenoid
- ㉛ Cylinder #1 - injector
- ㉜ Cylinder #2 - injector
- ㉝ Tachometer assembly
- ㉞ Tachometer
- ㉟ Tachometer light
- ㊱ Speedometer assembly
- ㊲ Engine trouble warning light
- ㊳ Neutral indicator light
- ㊴ Speedometer
- ㊵ Fuel level warning light
- ㊶ Left turn signal indicator light
- ㊷ Right turn signal indicator light
- ㊸ High beam indicator light
- ㊹ Speedometer light
- ㊺ Turn signal relay
- ㊻ Horn 1
- ㊼ Horn 2
- ㊽ Headlight relay
- ㊾ Left handlebar switch
- ㊿ Clutch switch
- 51 Dimmer switch
- 52 Horn switch
- 53 Turn signal switch
- 54 Front turn signal/position light (left)

- 55 Front turn signal/position light (right)
- 56 Rear turn signal light (right)
- 57 Rear turn signal light (left)
- 58 Headlight
- 59 Right handlebar switch
- 60 Front brake light switch
- 61 Engine stop switch
- 62 Start switch
- 63 Tail/brake light
- 64 License plate light
- 65 Rear brake light switch
- 66 Headlight fuse
- 67 Ignition fuse
- 68 Signaling system fuse
- 69 Decompression solenoid fuse
- 70 ECU fuse
- 71 Fuel injection system fuse

COLOR CODE

- B..... Black
 B3..... Black 3
 Br Brown
 Ch Chocolate
 Dg Dark green
 G Green
 Gy Gray
 L Blue
 Lg Light green
 O Orange
 P..... Pink
 R Red
 Sb..... Sky blue
 W..... White
 Y..... Yellow
 B/G Black/Green
 B/L..... Black/Blue
 B/O Black/Orange
 B/R Black/Red
 B/W Black/White
 B/Y Black/Yellow
 Br/B Brown/Black
 Br/L Brown/Blue
 Br/W Brown/White
 Br/Y Brown/Yellow
 G/L Green/Blue
 G/R..... Green/Red
 G/W Green/White
 G/Y Green/Yellow
 Gy/R..... Gray/Red
 L/B..... Blue/Black
 L/G Blue/Green
 L/R Blue/Red
 L/W..... Blue/White
 L/W1 Blue/White 1
 L/Y..... Blue/Yellow
 P/L..... Pink/Blue
 P/Y Pink/Yellow
 P/W Pink/White
 R/B Red/Black
 R/G Red/Green
 R/L Red/Blue
 R/W Red/White
 R/Y Red/Yellow
 W/B White/Black
 W/G White/Green
 W/Y White/Yellow
 Y/B Yellow/Black
 Y/G Yellow/Green
 Y/L..... Yellow/Blue
 Y/R Yellow/Red